

Number: PL-193
Date: October 24, 1999
From: NANPA

Subject: NANP- Overlay of 650 Numbering Plan Area (NPA) with 764 NPA - California

The California Public Utilities Commission (CPUC) in Decision 99-04-070 dated April 22, 1999, approved a single comprehensive overlay of the existing 650 NPA in northern California. North American Numbering Plan Administration has assigned the 764 NPA code for this purpose. The new 764 NPA will be in service beginning September 16, 2000, at 2:00 a.m. (PT).

The new 764 NPA will serve the same geographic area as the existing 650 NPA, including Millbrae, San Bruno, South San Francisco, San Mateo, Daly City, Pacifica, Half Moon Bay, Foster City, Redwood City, Menlo Park, Palo Alto, Mountain View and Los Altos. The attached map illustrates the 650 and 764 NPA configuration after the overlay.

In preparation for the introduction of the overlay code and mandatory 1+10 digit dialing, a permissive dialing period began on September 18, 1999. During the permissive period, subscribers are encouraged to dial 1+10 digits (i.e. 1 + NPA + NXX + XXXX) for all local, extended area service, and toll calls originating and terminating within the 650 NPA. Beginning June 17, 2000, at 2:00 a.m. (PT), 1 + 10 digit dialing will be mandatory for these calls.

The dialing plan described below applies to the 650 NPA after the beginning of mandatory dialing on June 17, 2000, and to the 764 NPA after its introduction on September 16, 2000.

- All home NPA (HNPA) local calls and Extended Area Service (EAS) calls, and toll calls within and between the 650 and 764 NPAs will be dialed with a prefix "1" and 10 digits, i.e., 1 + HNPA + NXX + XXXX (1+10 digits).
- All foreign NPA (FNPA) local calls, Extended Area Service (EAS) calls, and toll calls outside the 650 and 764 NPAs will be dialed with a prefix "1" and 10 digits, i.e., 1 + FNPA + NXX + XXXX (1+10 digits).
- All operator assisted calls, including credit card, collect, and third party calls, will be dialed with a "0" prefix and 10 digits, i.e. 0 + NPA + NXX + XXXX (0+10 digits).

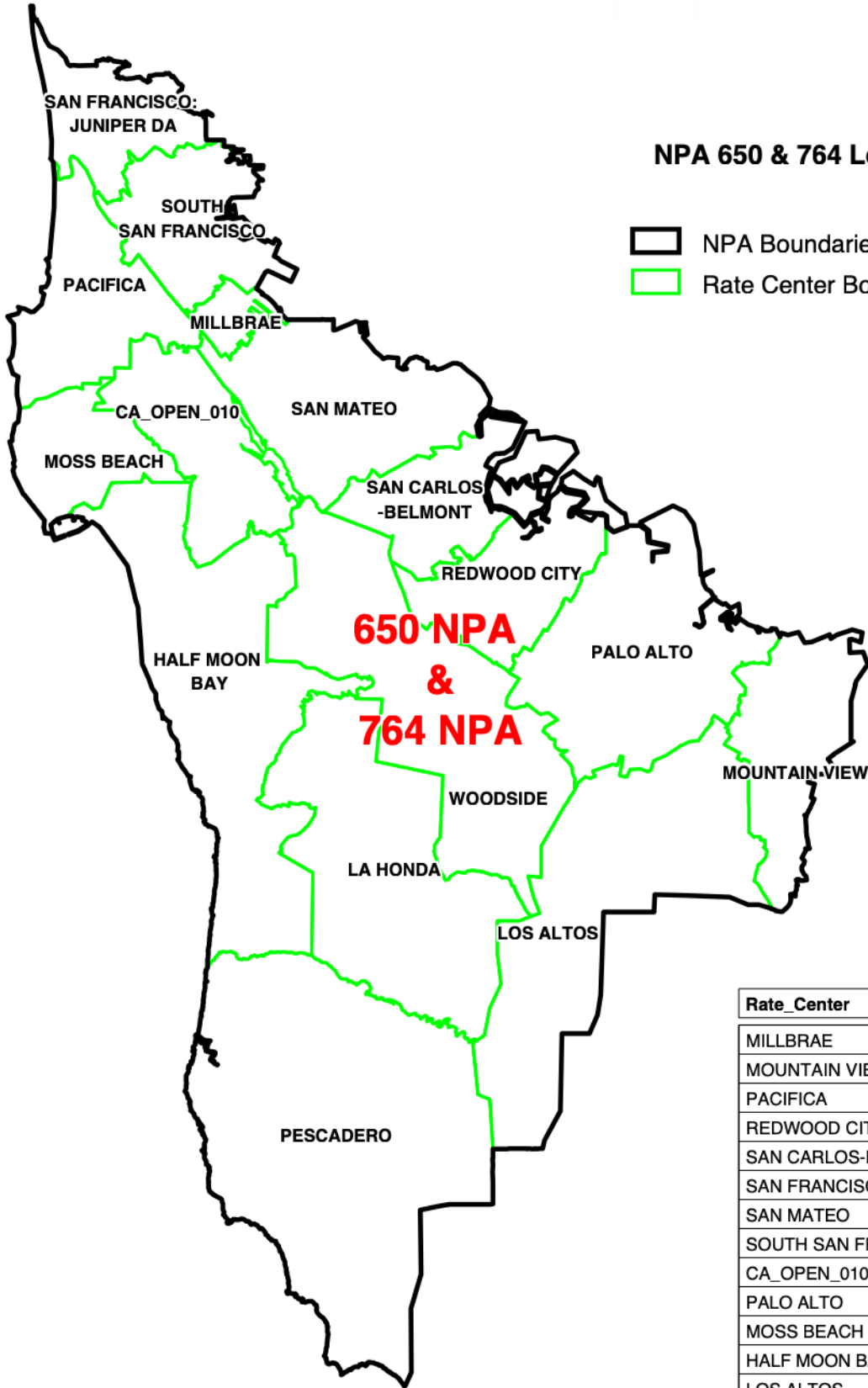
International and domestic carriers should ensure that the new 764 NPA has been activated throughout their networks prior to September 16, 2000. Test calls to verify routing to the new NPA code can be made by dialing 764 -666- 0764, effective August 12, 2000. Calls successfully completed to the test number will receive a recorded announcement. The test number will be disconnected January 13, 2001.

The special use NXX codes assigned in the 650 NPA for time service (767) and high volume call-in (HVCI) (478) will be duplicated in the new 764 NPA.


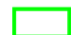
General questions concerning the overlay may be directed to Joe Cocke, NANPA – NPA Relief Planning – Western Region at 805-492-6327. Questions of a technical nature should be directed to the NPA project coordinator of each service provider.

Ron Conners
North American Numbering Plan Administration

**NPA 650 & 764
Rate Center Map
OVERLAY**



NPA 650 & 764 Legend

-  NPA Boundaries
-  Rate Center Boundaries

Rate_Center
MILLBRAE
MOUNTAIN VIEW
PACIFICA
REDWOOD CITY
SAN CARLOS-BELMONT
SAN FRANCISCO: JUNIPER DA
SAN MATEO
SOUTH SAN FRANCISCO
CA_OPEN_010
PALO ALTO
MOSS BEACH
HALF MOON BAY
LOS ALTOS
PESCADERO
WOODSIDE