

## NORTH AMERICAN NUMBERING PLAN LETTER

Number: PL-NANP-191

Date: August 26, 1999

From: R. C. Breidenbaugh - NANP Administration  
202 756-5779; E-mail : rose.breidenbaugh@nanpa.com

Subject: NANP- Overlay of 415 Numbering Plan Area (NPA) with 628 NPA - California

---

Substantial number growth in northern California necessitates providing additional area code relief for the 415 NPA. The relief plan, approved by the California Public Utilities Commission (CPUC) in Decision 99-04-025 dated April 1, 1999, calls for a single comprehensive overlay of the existing 415 NPA.

The new 628 NPA will consist of the same geographic area as the existing 415 NPA with such communities as Belvedere, Corte Madera, Ignacio, Inverness, Mill Valley, Nicasio, Novato, Point Reyes, San Francisco, San Rafael, Sausalito, and Stinson Beach.

In preparation for the introduction of the overlay code and mandatory 1+10 digit dialing, a permissive dialing period will begin on October 21, 1999, during which subscribers will be encouraged to dial 1+10 digits (i.e. 1 + NPA + NXX + XXXX) for all local, extended area service, and toll calls **both within and between** the 415 and 628 NPAs. Beginning July 24, 2000, at 2:00 a.m. (PT) all local, extended area service and toll calls **within and between** NPAs involved in the overlay will require 1+10 digits. Implementation of the 628 NPA will be on October 21, 2000, at 2:00 a.m. (PT).

The attached map illustrates the 415 and 628 NPA configuration after the overlay.

After the beginning of mandatory 1+10 digit dialing on July 24, 2000, the dialing plan for the 415 and 628 NPAs will be as follows:

- All home NPA (HNPA) local calls and Extended Area Service (EAS) calls, and toll calls within the 415 and 628 NPAs will be dialed with a prefix "1" and 10 digits, i.e., 1 + HNPA + NXX + XXXX (1+10 digits).
- All foreign NPA (FNPA) local calls, Extended Area Service (EAS) calls, and toll calls outside the 415 and 628 NPAs will be dialed with a prefix "1" and 10 digits, i.e., 1 + FNPA + NXX + XXXX (1+10 digits).
- All operator assisted calls, including credit card, collect, and third party calls, will be dialed with a "0" prefix and 10 digits, i.e. 0 + NPA + NXX + XXXX (0+10 digits).

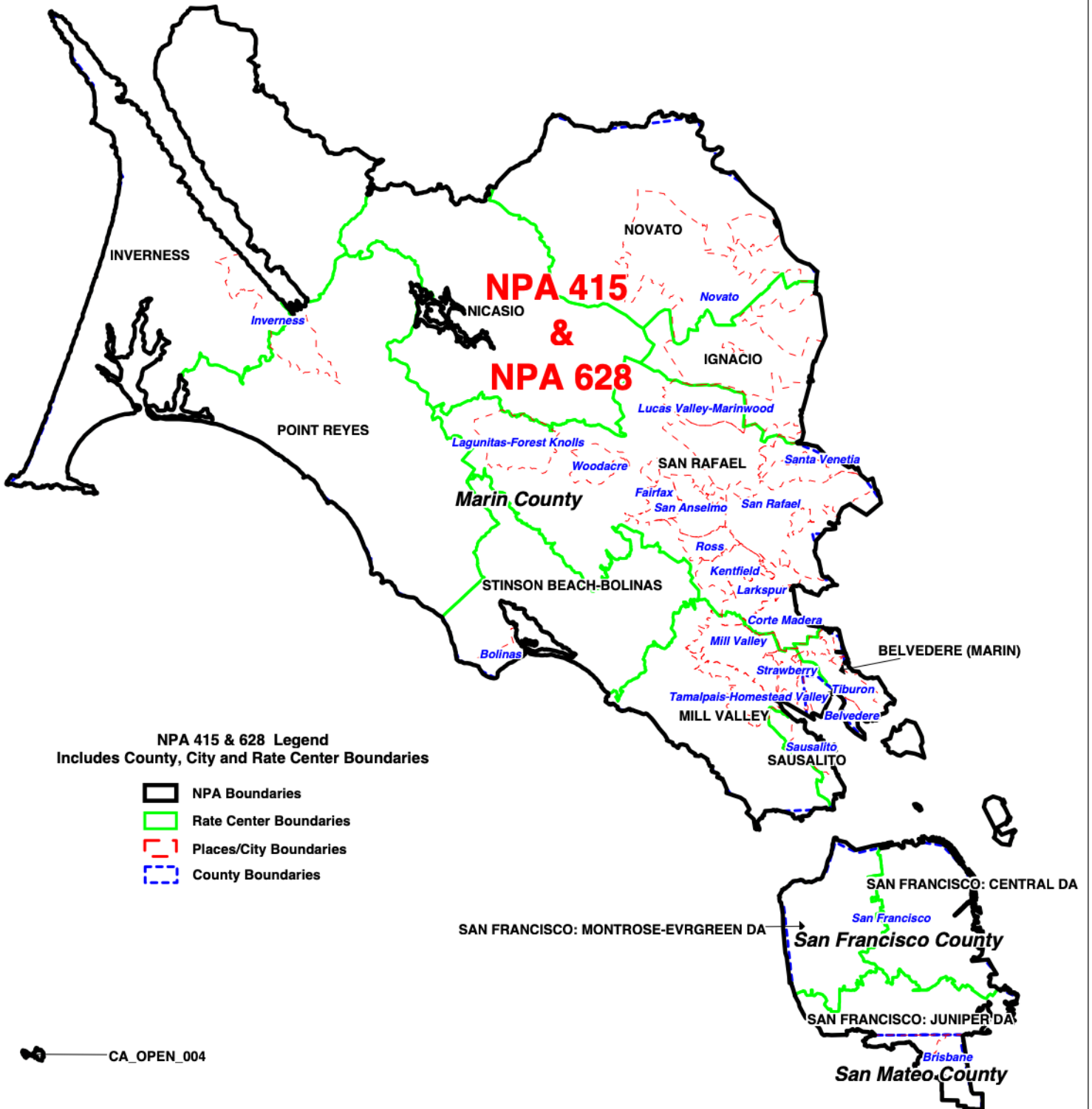
All international and domestic carriers are asked to ensure that the new 628 NPA has been activated throughout their networks prior to October 21, 2000. Test calls to verify routing to the new NPA code can be made by dialing 628 -800- 0628, effective September 16, 2000. Calls successfully completed to the test number will receive a recorded announcement. The test number will be disconnected March 17, 2001.

The special use NXX codes assigned in the 415 NPA for time service (767) and high volume call in (HVCI) (478) will be duplicated in the new 628 NPA.

General questions concerning the overlay may be directed to Joe Cocke, Lockheed Martin IMS – NPA Relief Planning – Western Region at 805-492-6327. Questions of a technical nature should be directed to the NPA project coordinator of each respective service provider:

Rose Breidenbaugh  
North American Numbering Plan Administration

**NPA 415 & 628  
Rate Center Map  
OVERLAY**



**NPA 415 & 628 Legend**  
Includes County, City and Rate Center Boundaries

- NPA Boundaries
- Rate Center Boundaries
- Places/City Boundaries
- County Boundaries

CA\_OPEN\_004